

Welcome to the AccessibilityOnline Webinar Series



A collaborative program between the
ADA National Network and the
U.S. Access Board



The Session is Scheduled to begin at 2:30pm Eastern Time
We will be testing sound quality periodically

Audio and Visual are provided through the on-line webinar system. This session is closed captioned. Individuals may also listen via telephone by dialing 1-712-432-3100 code 930098 (This is **not** a Toll Free number)

The content and materials of this training are property of the US Access Board and the Great Lakes ADA Center and cannot be used and/or distributed without permission. This program is funded through a contract agreement with the U.S. Access Board. For permission to use training content or obtain copies of materials used as part of this program please contact us by email at adata@adagreatlakes.org or toll free (877)232-1990 (V/TTY)

www.AccessibilityOnline.org

1



Listening to the Webinar



- The audio for today's webinar is being broadcast through your computer. Please make sure your speakers are turned on or your headphones are plugged in.
- You can control the audio broadcast via the Audio & Video panel. You can adjust the sound by "sliding" the sound bar left or right.
- If you are having sound quality problems check your audio controls by going through the Audio Wizard which is accessed by selecting the microphone icon on the Audio & Video panel



2



Listening to the Webinar, *continued*

If you do not have sound capabilities on your computer or prefer to listen by phone, dial:

1-712-432-3100

Pass Code:
930098

This is **not** a Toll Free number

3



Listening to the Webinar, *continued*

MOBILE Users (iPhone, iPad, or Android device and Kindle Fire HD)

Individuals may listen** to the session using the Blackboard Collaborate Mobile App (Available Free from the Apple Store, Google Play or Amazon)




**Closed Captioning is not visible via the Mobile App and limited accessibility for screen reader/Voiceover users

4



Captioning

- Real-time captioning is provided during this webinar.
- The caption screen can be accessed by choosing the  icon in the Audio & Video panel. ↓



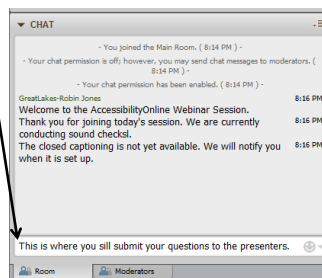
- Once selected you will have the option to resize the captioning window, change the font size and save the transcript.

5



Submitting Questions

- **You may type and submit questions in the Chat Area Text Box or press Control-M and enter text in the Chat Area**
- **If you are connected via a mobile device you may submit questions in the chat area within the App**
- **If you are listening by phone and not logged in to the webinar, you may ask questions by emailing them to webinars@accessibilityonline.org**



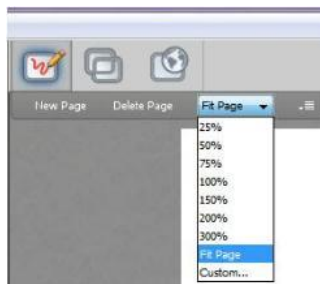
Please note: This webinar is being recorded and can be accessed on the AccessibilityOnline website at www.accessibilityonline.org/Archives within 24 hours after the conclusion of the session.

6



Customize Your View

- Resize the Whiteboard where the Presentation slides are shown to make it smaller or larger by choosing from the drop down menu located above and to the left of the whiteboard. The default is “fit page”




7



Customize Your View *continued*



- Resize/Reposition the Chat, Participant and Audio & Video panels by “detaching” and using your mouse to reposition or “stretch/shrink”. Each panel may be detached using the  icon in the upper right corner of each panel.

8

Setting Preferences

- Depending on your system settings you may receive visual and audible notifications when individuals enter/leave the webinar room or when other actions are taken by participants. This can be distracting.
- To turn off notifications (audible/visual)
 - Select “Edit” from the tool bar at the top of your screen
 - From the drop down menu select “Preferences”
 - Scroll down to “General”
 - select “Audible Notifications” Uncheck anything you don’t want to receive and “apply”
 - Select “Visual Notifications” Uncheck anything you don’t want to receive and “apply”
 - For Screen Reader User – Set preferences through the setting options within the Activity Window (Ctrl+slash opens the activity window)

9



Technical Assistance



- If you experience any technical difficulties during the webinar:
 1. Send a private chat message to the host by double clicking “Great Lakes ADA” in the participant list. A tab titled “Great Lakes ADA” will appear in the chat panel. Type your comment in the text box and “enter” (Keyboard - F6, Arrow up or down to locate “Great Lakes ADA” and select to send a message); or
 2. Email webinars@accessibilityonline.org ; or
 3. Call 877-232-1990 (V/TTY)

10

Accessible Retail Stores and Spaces “Advanced Session”

**Presented by: Paul Beatty and
Earlene Sesker**

11

Session Agenda

- **Alterations**
- **Exterior**
- **Interior**
- **Questions**

12

Alterations §202.3 & F202.3

Standards apply based on:

- **planned scope of work**
- **technical feasibility**
- **primary function areas/ path of travel**

13

Alterations

Within an altered space, standards apply to those elements that are altered



(accessible route not required unless circulation paths altered or path of travel required)

14

Alterations

Specific provisions for alterations located throughout standards (refer to “alterations” or “existing facilities”)



15

Alterations

“Technical Infeasibility” =
Existing physical/site constraints that
prohibit compliance

***Example:* removing fixture to create accessible stall conflicts with plumbing code**

16

Alterations: Path of Travel

§202.4

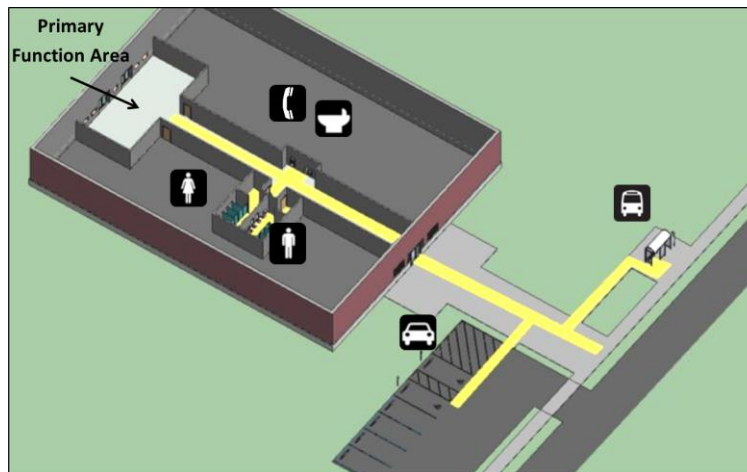
Alterations to primary function areas require accessible “path of travel”:

- accessible route (from site arrival points, parking, building entrances)
- restrooms
- phones
- drinking fountains

17

Alterations: Path of Travel

Example of “path of travel”



18

Accessible Route Scoping

§206 & F206

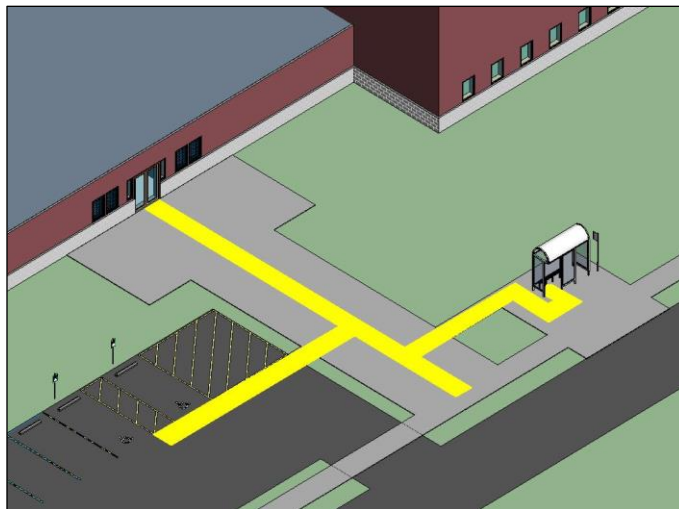
At least 1 accessible route to:

- public streets and sidewalks
- accessible entrances to each tenancy
- accessible parking
- all public use and common use area on the site

UNITED STATES ACCESS BOARD

19

Accessible Routes



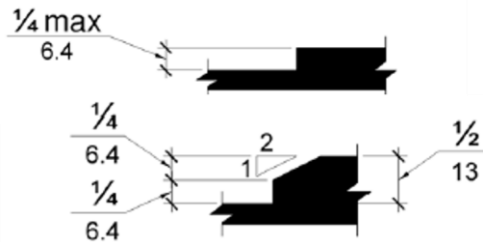
UNITED STATES ACCESS BOARD

20

Brick Pavers and Stamped Concrete on Accessible Routes

302.3 Openings. Openings ... shall not allow passage of a sphere more than $\frac{1}{2}$ inch (13 mm) diameter

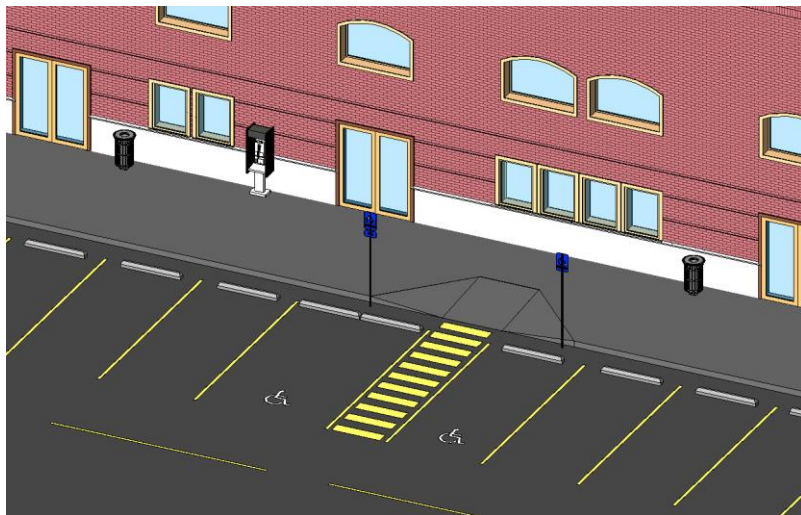
303 Changes in Level



UNITED STATES ACCESS BOARD

21

Accessible Parking



UNITED STATES ACCESS BOARD

22

Accessible Parking Scoping

§208 & F208

- Exception for lots used exclusively for delivery and company fleet vehicles
- Location: Where limited spaces serve several tenancies, place spaces on shortest route possible to all accessible entrances.

UNITED STATES ACCESS BOARD

23

Parking Spaces

AR must connect to access aisles at accessible parking spaces



Recommended: connect AR to front of aisle to prevent travel behind parked cars

24

Parking Signs

§216.5 & F216.5

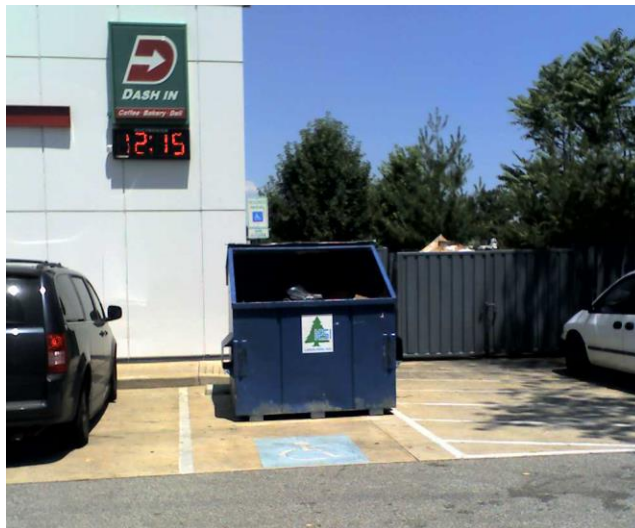
- Accessible parking signs are not required for lots with 4 or fewer spaces (including accessible spaces).



UNITED STATES ACCESS BOARD

25

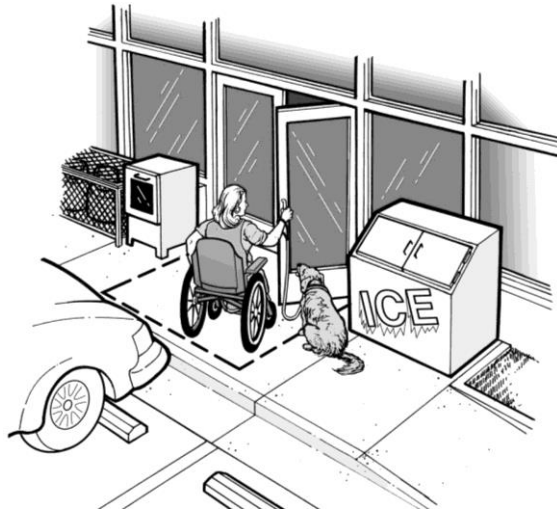
Accessible Parking “Don’ts”



UNITED STATES ACCESS BOARD

26

Entrances

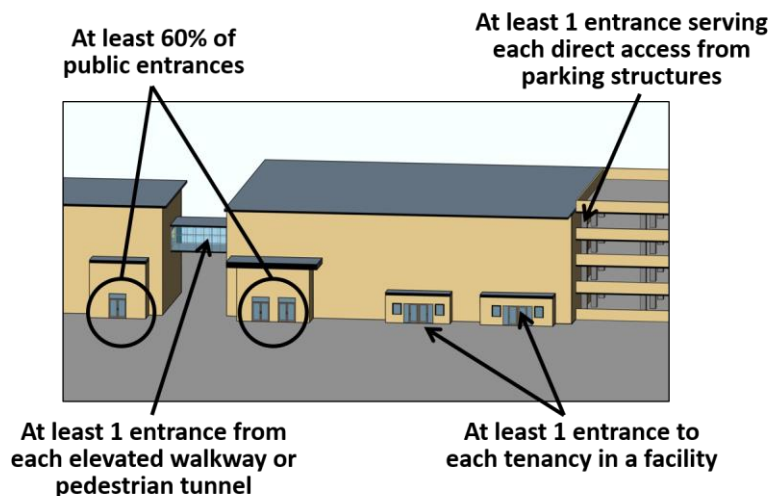


UNITED STATES ACCESS BOARD

27

Entrances §206.4 & F206.4

Minimum Number



28

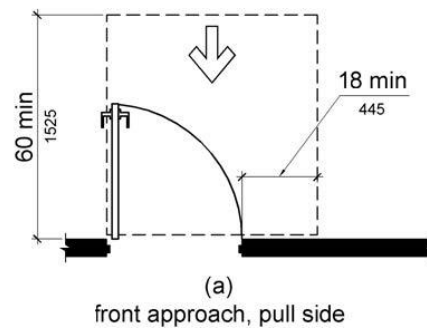
Entrances



Automation of exterior doors recommended

29

Doors, Doorways, Gates §404 Maneuvering Clearances



UNITED STATES ACCESS BOARD

30

Doors in Series

48" min. separation between swing of doors



31

Interior

32

More than the ADA Standards



ADA Regulations
ADA Standards

UNITED STATES ACCESS BOARD

33

Exempted Employee Work Areas §203.9 & F203.9

Not in ABA

106.5 Definitions.

Employee Work Area. All or any portion of a space used only by employees and used only for work. Corridors, toilet rooms, kitchenettes and break rooms are not employee work areas.

UNITED STATES ACCESS BOARD

34

Example

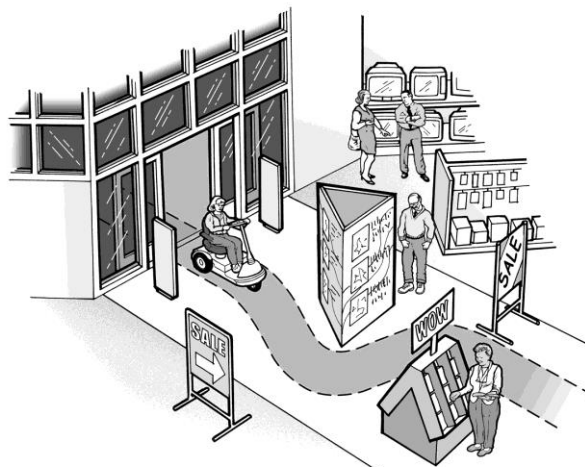
- Approach, Enter, and Exit
- If 1000 sq.ft. or more, all circulation paths = accessible routes
- Accessible means of egress
- Wiring for visual alarms



UNITED STATES ACCESS BOARD

35

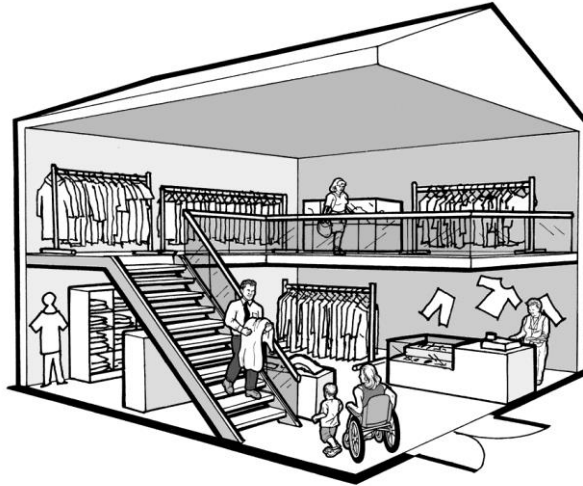
Interior Accessible Routes



UNITED STATES ACCESS BOARD

36

Elevator Exceptions

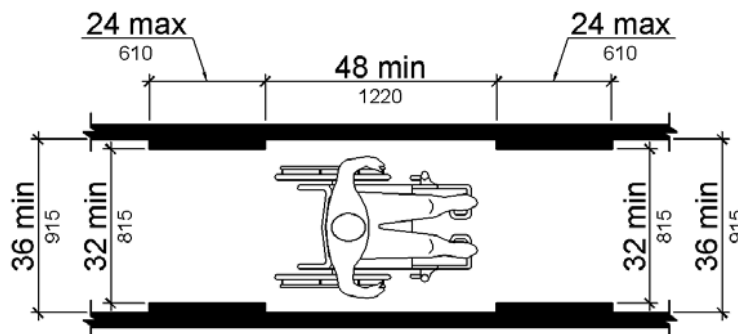


UNITED STATES ACCESS BOARD

37

Clearances

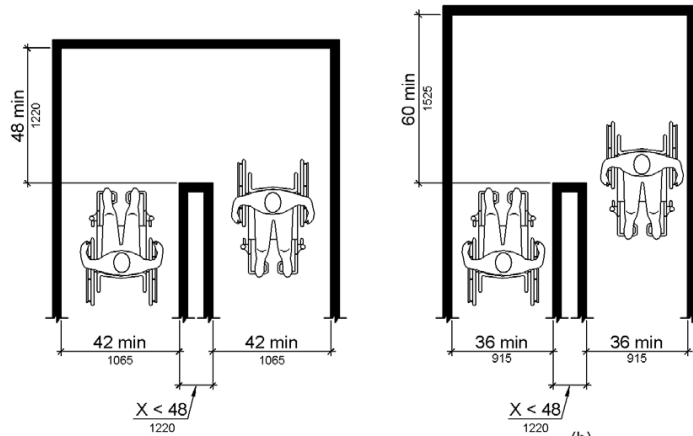
48" min. separation between reduced clearances



UNITED STATES ACCESS BOARD

38

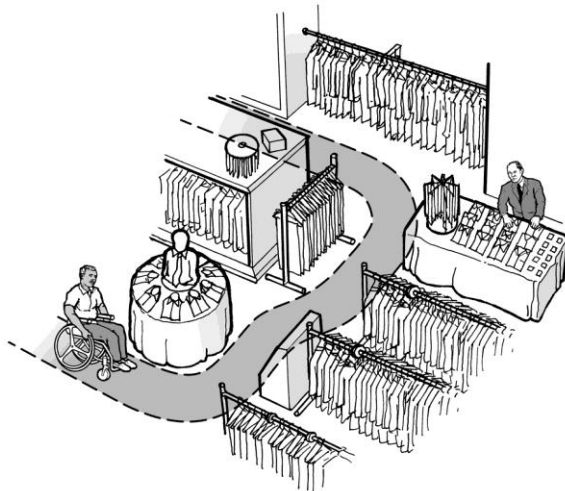
Clearances



UNITED STATES ACCESS BOARD

39

Clearances Around Retail Fixtures §225 & F225



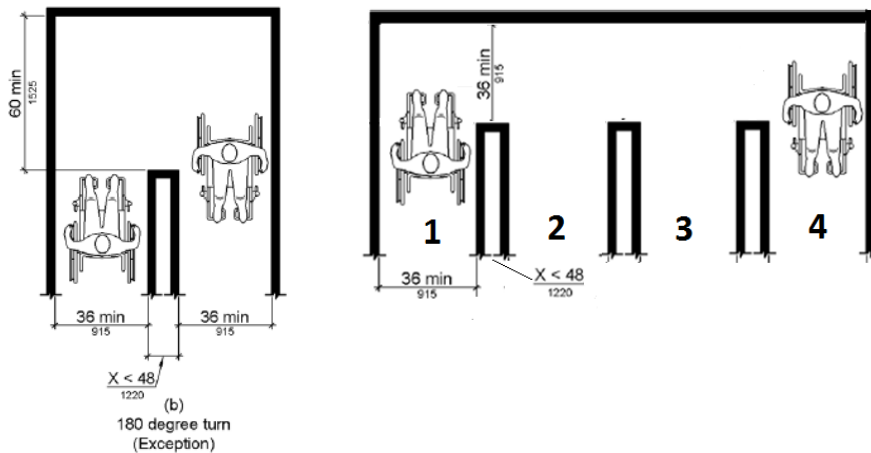
Accessible route connects:

- 1 of each type storage facility
- All self-service shelving

UNITED STATES ACCESS BOARD

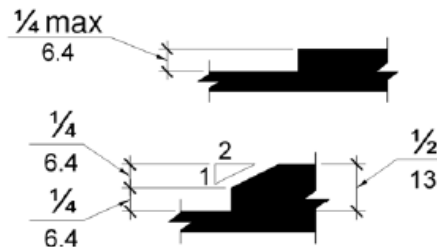
40

Must Make 180 Degree Turn



41

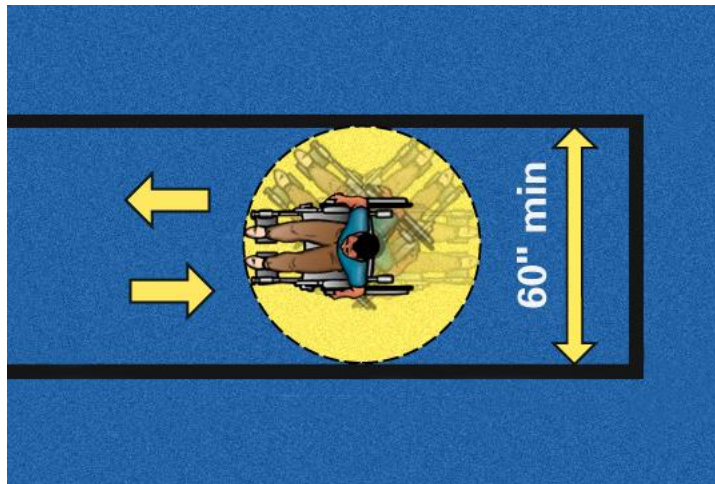
Queue Lines – Clear Width §227.5, F227.5 & 403



UNITED STATES ACCESS BOARD

42

Turning Space



UNITED STATES ACCESS BOARD

43

Merchandise Shelving and Displays



UNITED STATES ACCESS BOARD

44

Storage §225 & F225

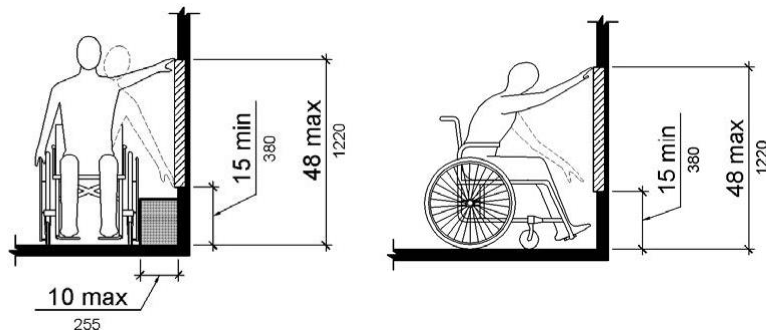
- At least one of each type accessible
- Lockers: 5% of each type accessible
 - On accessible route
 - Within reach ranges
- Shelf service shelving: all on accessible route

UNITED STATES ACCESS BOARD

45

Reach Ranges §308

Max. Reach – 48” Min. Reach – 15”
(forward & side)



UNITED STATES ACCESS BOARD

46

Self Service Shelving

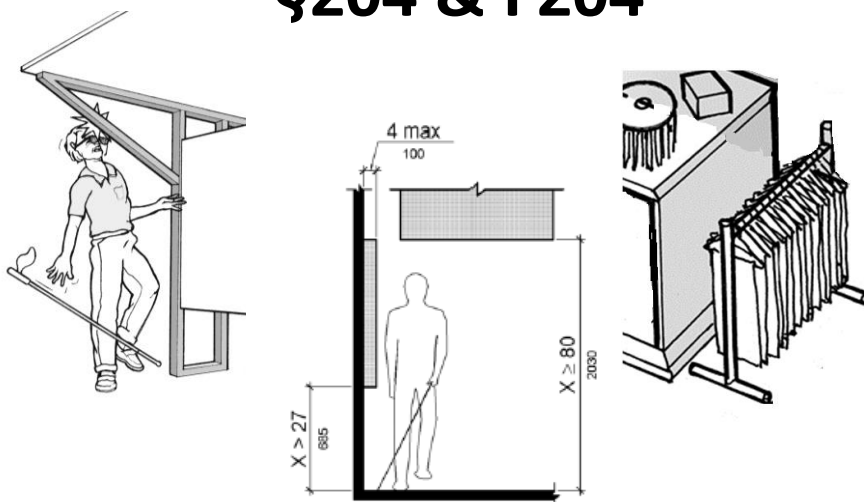


Reach ranges do not apply to self-service shelving

UNITED STATES ACCESS BOARD

47

Protruding Objects §204 & F204



UNITED STATES ACCESS BOARD

48

Protruding Objects

Scoping:
**Applies to each
circulation path**



UNITED STATES ACCESS BOARD

49

What is a circulation path?

§ 106.5

Circulation Path. An exterior or interior way of passage provided for pedestrian travel, including but not limited to, walks, hallways, courtyards, elevators, platform lifts, ramps, stairways, and landings.

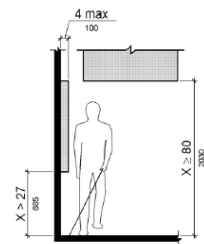
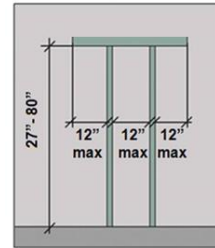
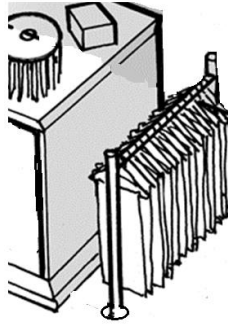
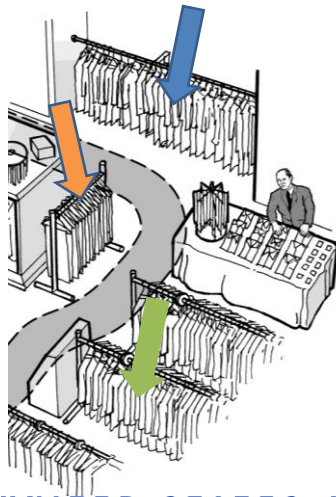
Intended Purpose



UNITED STATES ACCESS BOARD

50

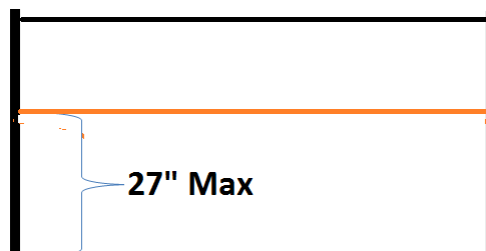
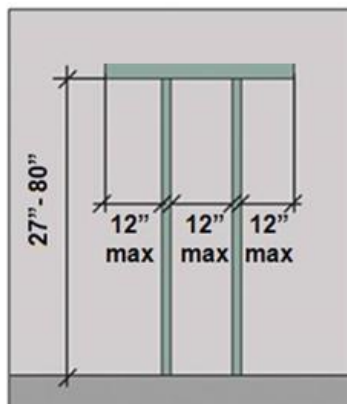
Protruding Objects and Retail Fixtures



UNITED STATES ACCESS BOARD

51

Protruding Objects Queue Lines §204, F204 & 307



UNITED STATES ACCESS BOARD

52

Sales and Service §227 & F227

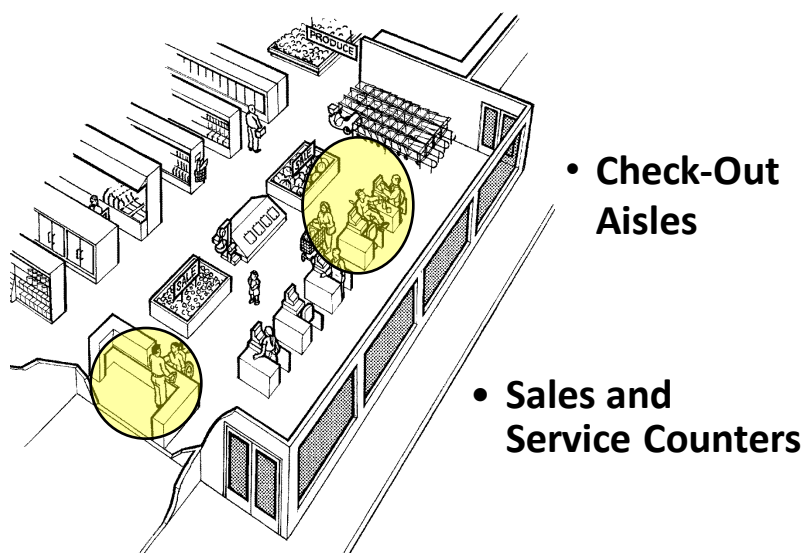
Items addressed include:

- check-out aisle
- sales and service counters
- food service lines
- queues and waiting lines

UNITED STATES ACCESS BOARD

53

Grocery Store



UNITED STATES ACCESS BOARD

54

Check-Out Aisles

§227.2 & F227.2

Minimum Number

Table 227.2 Check-Out Aisles

Number of Check-Out Aisles of Each Function	Minimum Number of Check-Out Aisles of Each Function Required to Comply with 904.3
1 to 4	1
5 to 8	2
9 to 15	3
16 and over	3, plus 20 percent of additional aisles

UNITED STATES ACCESS BOARD

55

Check-Out Aisles

§227.2 & F227.2

- Dispersion
- exception where selling space under 5000 square feet – no more than one required to comply
- altered check-out aisles - at least one until minimum number complies (227.2.1)

UNITED STATES ACCESS BOARD

56

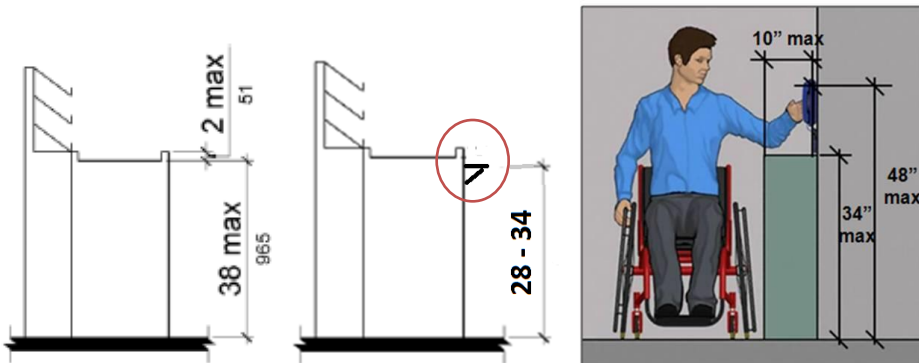
Check-Out Aisles §904.3

- Aisle §904.3.1
- Counter §904.3.2
- Check Writing Surfaces §904.3.3

UNITED STATES ACCESS BOARD

57

Checkout Aisle Key Pads & Check Writing Surface §227.2, F227.2 & 904.3



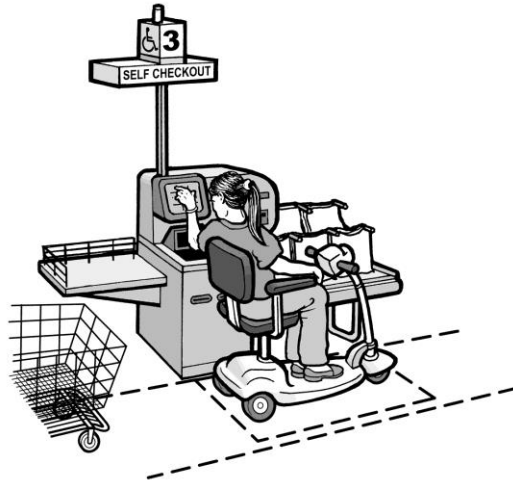
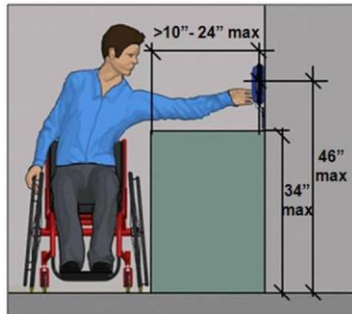
Obstructions at side reaches are limited to a height of 34".

UNITED STATES ACCESS BOARD

58

Self Serve Check-Out Aisles

Operable parts:
§205, F205 & 309



UNITED STATES ACCESS BOARD

59

Check-Out Aisles §904.3

36" Min. Width



UNITED STATES ACCESS BOARD

60

Sales and Service Counters §227.3 & F227.3

Scoping: one of
each type

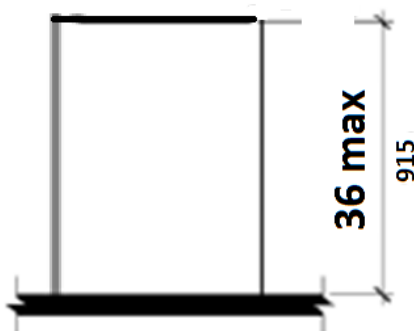


UNITED STATES ACCESS BOARD

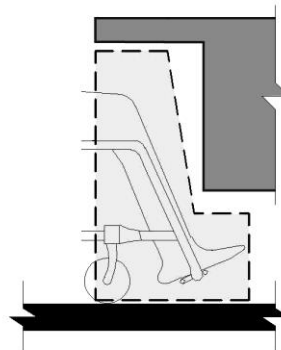
61

Sales and Service Counters §904.4

Parallel Approach



Forward Approach



UNITED STATES ACCESS BOARD

62

Sales and Service Counters

Exception in alterations when number of existing counters would be reduced

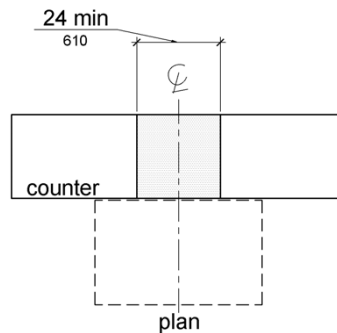
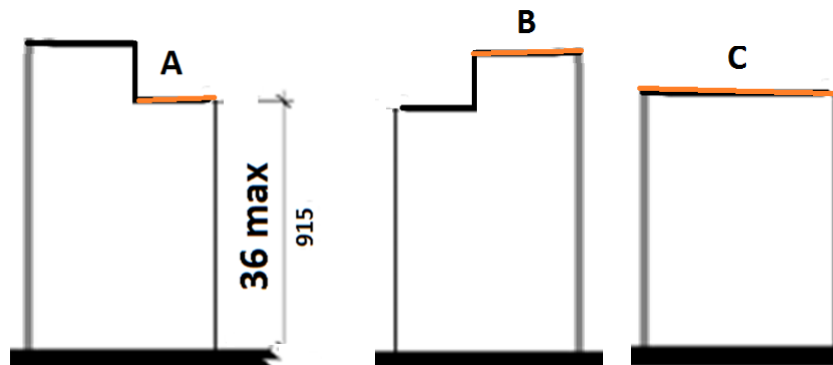


Figure 904.4 (Exception)
Alteration of Sales and Service Counters

63

Service Counter - Depth

Same depth as the counter top



UNITED STATES ACCESS BOARD

64

Service Counter - Width

- 36 inch minimum width
- No merchandise and equipment



UNITED STATES ACCESS BOARD

65

Security Glazing §904.6

- addresses communication issues
- telephone volume control §704.3



UNITED STATES ACCESS BOARD

66

Food Service Lines §227.4 & F227.4

- All food service lines must comply



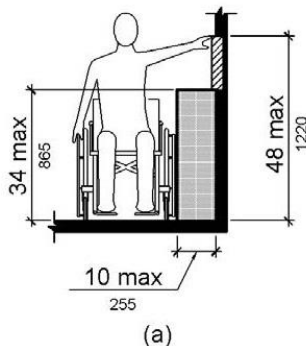
- Tray slide height: 28 to 34 inches

UNITED STATES ACCESS BOARD

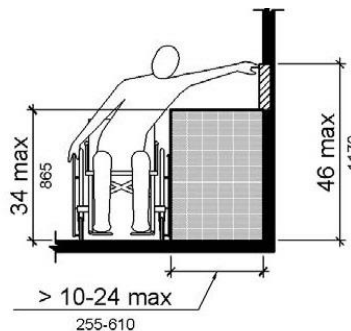
67

Food Service Lines Self-Service Shelves

- At least 50% of each type must be within an accessible reach range.



(a)



(b)

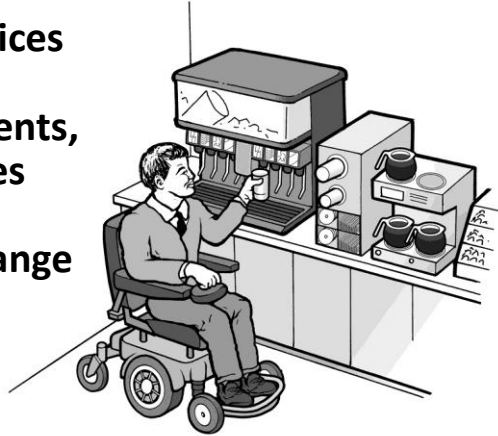
UNITED STATES ACCESS BOARD

68

Dispensing Devices

§227.4, F227.4 & 904.5

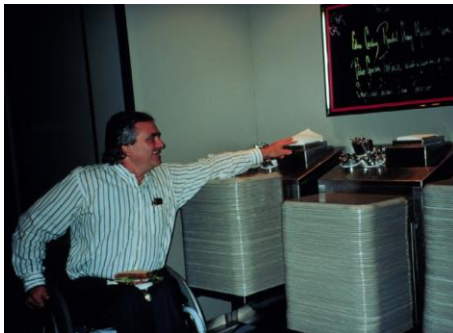
- All dispensing devices for tableware, dishware, condiments, food and beverages must be within an accessible reach range



UNITED STATES ACCESS BOARD

69

Dispensing Devices §904.5.1

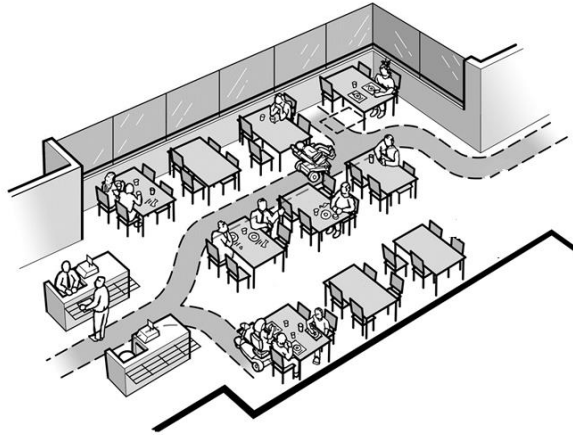


UNITED STATES ACCESS BOARD

70

Dining Surfaces §226 & F226

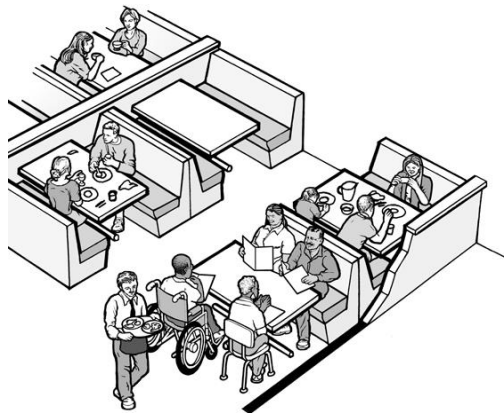
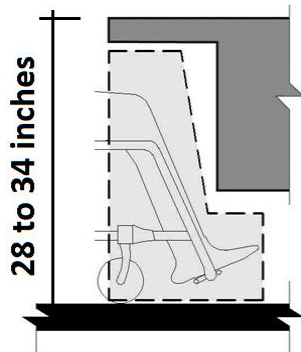
- 5 percent of standing or seating spaces
- Dispersal



UNITED STATES ACCESS BOARD

71

Dining Surfaces §902



UNITED STATES ACCESS BOARD

72

Dressing Rooms §222 & F222

- At least 5% of each type
- At least one of each type of coat hook and shelf

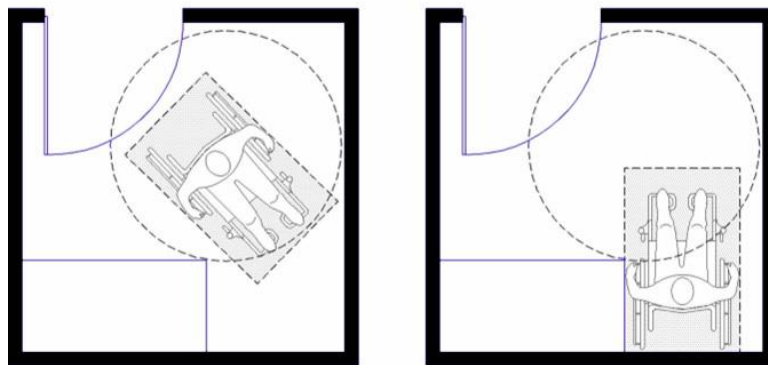
Alterations: If technically infeasible



UNITED STATES ACCESS BOARD

73

Dressing/ Fitting/ Locker Rooms

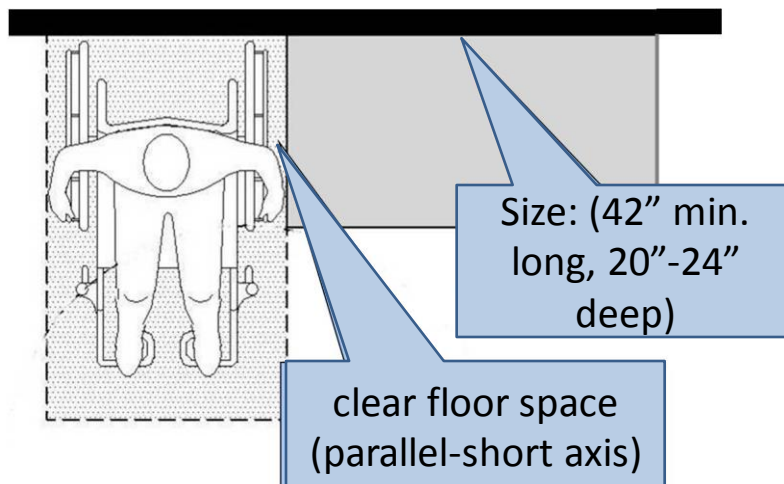


- Door swing into turning space (if wheelchair space beyond swing)

UNITED STATES ACCESS BOARD

74

Benches §903

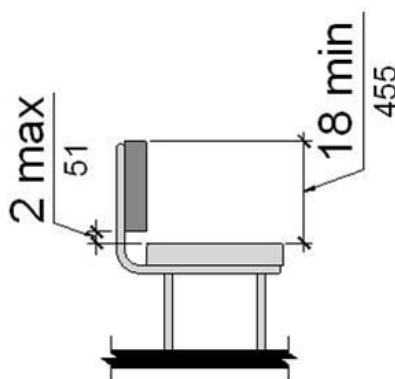


UNITED STATES ACCESS BOARD

75

Benches

- Back support - new specifications



UNITED STATES ACCESS BOARD

76

ATMs and Fare Machines §220 & F220

Access to 1 of each type at each location

- speech output
- privacy
- input controls
- display screen
- Braille instructions (for speech mode)



UNITED STATES ACCESS BOARD

77

Vending Machines §228 & F228

Access to 1 of each type

- reach range
- clear floor space



UNITED STATES ACCESS BOARD

78

Questions?

**You May Type and Submit questions in the
Chat Area Text Box or press Control-M and
enter text in the Chat Area**

79



U.S. Access Board

(800) 872-2253 (voice)

(800) 993-2822 (TTY)

E-mail: ta@access-board.gov

www.access-board.gov

80

**Thank you for participating
in today's webinar**



Next scheduled session:

"Accessible Emergency Transportable Housing"

December 4, 2014

www.AccessibilityOnline.org

877-232-1990 (V/TTY)

81



Continuing Education



AIA Provider Number: I017

LA CES Provider Name: Great Lakes ADA Center

AICP Provider Name: Great Lakes ADA Center



Course Title: Accessible Retail Stores and Spaces: Advanced Session

Course Number: GL20141106 November 6, 2014



Credits earned on completion of this course will be reported to **AIA CES** for AIA members and **LA CES** for those with an LA number. Certificates of Completion are available upon request.



This course is registered with **AIA, LA CES, and AICP** for continuing professional education. As such, it does not include content that may be deemed or construed to be an approval or endorsement by the professional organizations of any material of construction or any method or manner of handling, using, distributing, or dealing in any material or product.

Questions will be addressed at the conclusion of this presentation.

82